

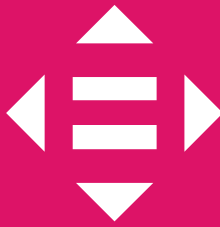
REDUCING INEQUALITIES



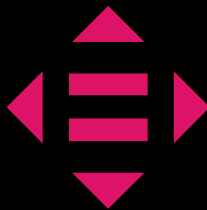
AN EBOOK BY

NIDHI SARAH JOHNSON &
MALAVIKA LIBISH

10 REDUCED
INEQUALITIES



**10.4 Adopt policies,
especially fiscal, wage and
social protection policies,
and progressively achieve
greater equality**



WHAT IS

INEQUALITY?

Social inequality is described as the presence of inequitable opportunities and rewards for varying social conditions or standings within a society.

An example of inequality is when you possess ten of something and someone else has none.



WHEN DOES INEQUALITY

ARISE?

Social inequality can develop through a society's perception of appropriate gender roles, or through the predominance of social stereotyping. Social bias is associated with racial inequality, gender inequality, and capital imbalance.



STATISTICS

- Only 28 percent of people with notable disabilities have access to disability benefits globally and only 1 percent in low-income countries.
- By the World Bank's index measures, just six countries now have laws that defend men and women fairly: Belgium, Denmark, France, Latvia, Luxembourg, and Sweden.
- Income disparities are so articulated that America's top 10 percent now equate exceeding nine times as much income as the base 90 percent.
- Most of the care work done around the world is voluntary and done by women and girls, often from marginalized groups



OUR SOLUTIONS

- Individuals can vote to attain equality.
- Individuals, particularly those with privileges can use that capability to protect the suppressed.
- Invest and support educational opportunities amongst weaker sections of society. It is imperative that we foster children with disabilities and their families through early intervention and securing meaningful access to education.
- Guarantee that technology is used to promote the concerns of persons with disabilities.
- Preserve the civil liberties of people with limitations on matters such as voting, criminal justice, and parental custody.

- The government should operate towards establishing a setting where people are provided decent jobs with minimum wages and are working to their full potential. Through these means, we can expand job opportunities for lower sections of society.
- Establish laws that ensure that women are paid at par with men for identical work. Equal pay for equal work. Today, this is only found in certain countries and we should extend this to all 195 countries by 2030.
- It is crucial to create a culture of fairness and inclusion in our society and workplace.
- We need to spread awareness about the issue. We must not solely educate ourselves but including those around us.

COVID-19'S IMPACT ON **INEQUALITY**

Inequality in wealth:

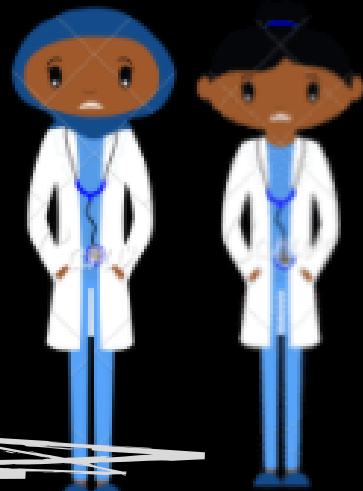
As common people around the world suffer from the health and economic impacts of the pandemic, billionaires have actually observed their fortunes increase.

According to the Institute for Policy Studies analysis of Forbes data, the combined wealth of all U.S. billionaires increased by \$1.138 trillion (39 percent) between March 18, 2020, and January 18, 2021, from approximately \$2.947 trillion to \$4.085 trillion.



Inequality in care work:

Care work is crucial to the functioning of our society at any point. Throughout the pandemic, this workforce, which is largely composed of females and a disproportionate amount of people of color, has become even more vital. The expression “care work” comprises both paid and unpaid work and direct activities, like caring for children or nursing someone who is ill, as well as indirect care, like cooking and cleaning





THE END

